



Chanctonbury Way, Woodside Park, N12 7AE  
Guide Price £925,000 Freehold Council Tax Band F

**REAL ESTATES**  
Est.1981

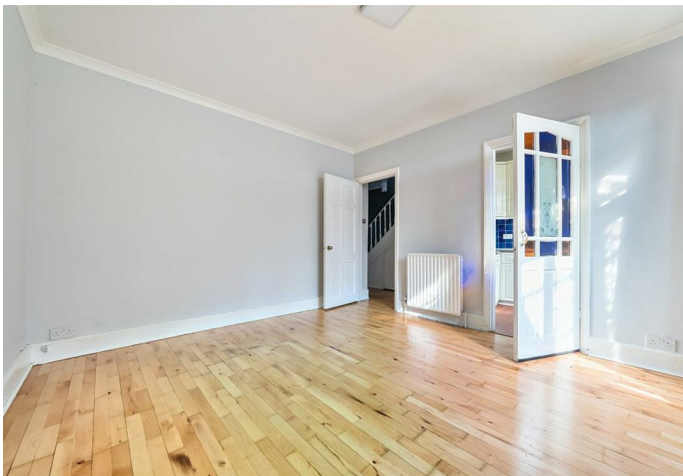
Estate Agents · Residential Sales · Investments · Lettings

\* CHAIN FREE \* Real Estates are pleased to offer this 3 BEDROOM SEMI-DETACHED house on a dead-end residential street in Woodside Park.

Benefitting from a SOUTH FACING GARDEN, the property has potential to extend into the loft and out the rear (STPP). The ground floor accommodation comprises two reception rooms, a separate kitchen and guest WC. Upstairs are two double bedrooms, one single bedroom and the family bathroom.

Chanctonbury Way is a quiet and secluded location within easy reach of Woodside Park Underground Station, the shops and cafes on Sussex Ring plus the pathways and green spaces of the Dollis Valley Brook.

Sole Agent





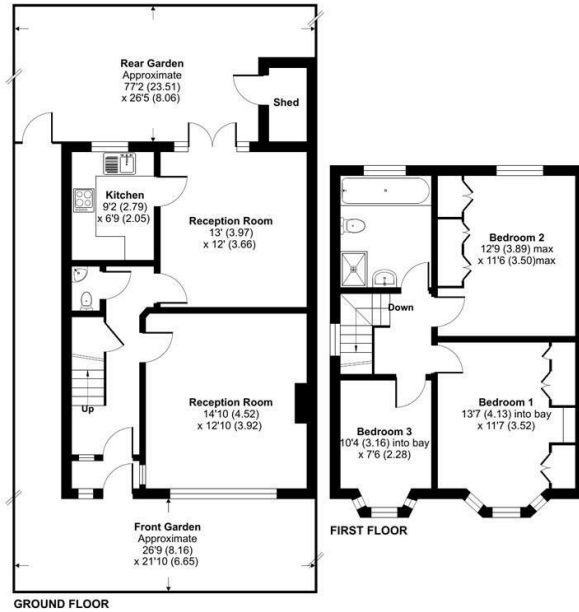
# Chanctonbury Way, London, N12

Approximate Area = 1034 sq ft / 96 sq m  
 Shed = 19 sq ft / 1.7 sq m  
 Total = 1053 sq ft / 97.7 sq m  
 For identification only - Not to scale

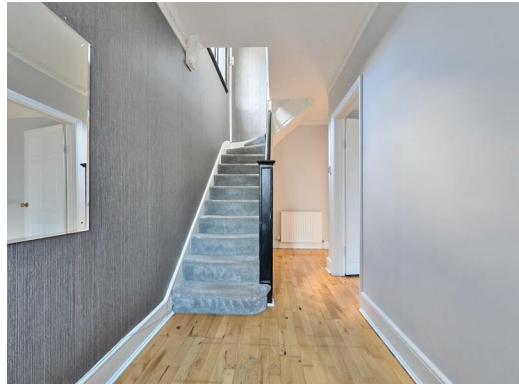


Energy Efficiency Rating		Current	Potential
Very energy efficient - lower running costs	A		
Energy efficient - lower running costs	B		79
Decent energy efficiency - lower running costs	C		
Some energy efficiency - lower running costs	D		
Low energy efficiency - higher running costs	E	42	
Very low energy efficiency - higher running costs	F		
Very poor energy efficiency - higher running costs	G		

EU Directive



Floor plan produced in accordance with RICS Property Measurement 2nd Edition, incorporating International Property Measurement Standards (IPMS2 Residential). © richcom 2025. Produced for Real Estates. REF: 1260976



Real Estates Woodside Park Office:  
 14/14a Sussex Ring  
 Woodside Park N12 7HX

ll : 020 8445 6387  
 e : info@realestates-wsp.co.uk  
 w : www.realestates-wsp.co.uk